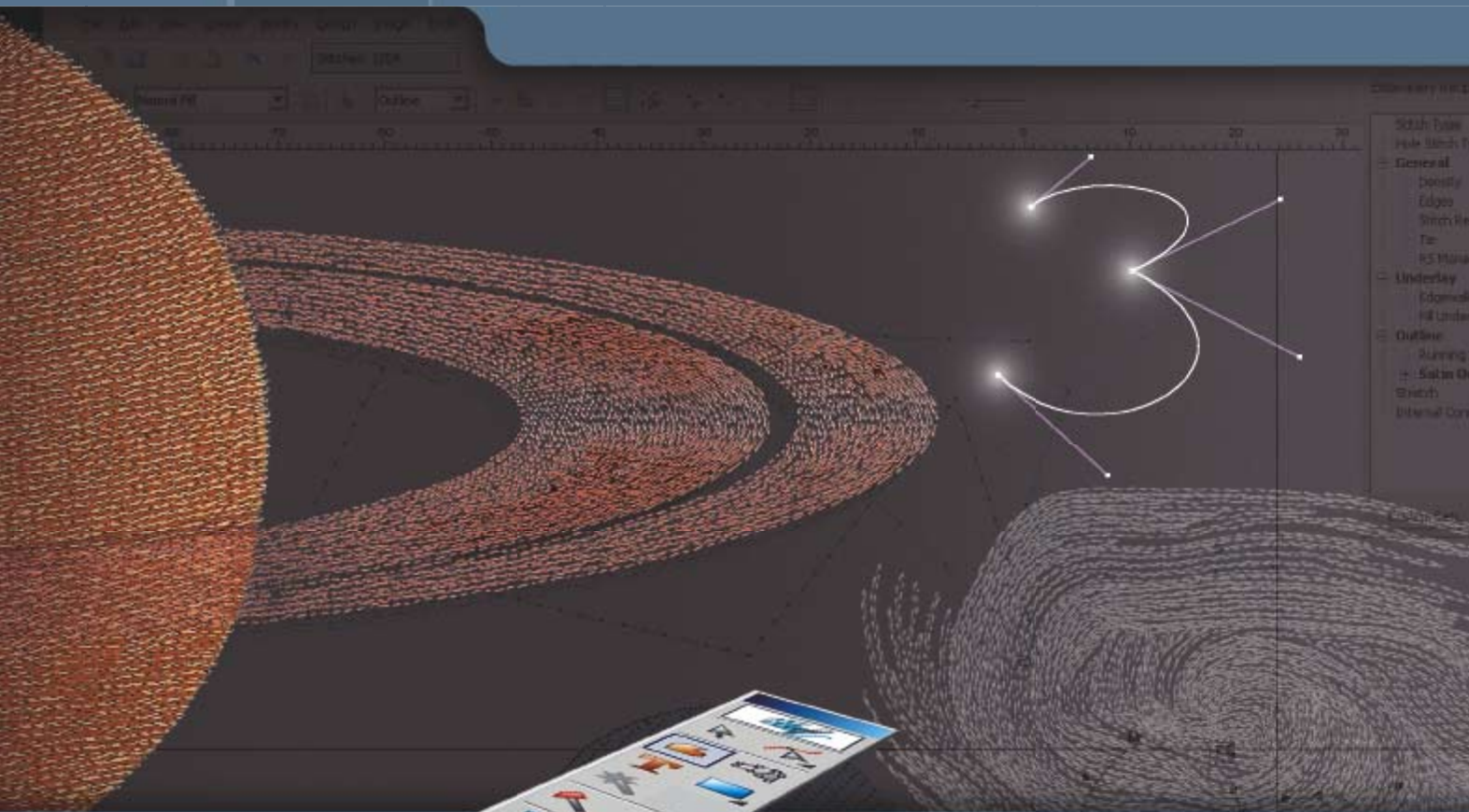


EOS

EMBROIDERY OPERATING SYSTEM

:just imagine





Imagine embroidery software which is both powerful and easy to use - an impossible combination? Welcome to the world of EOS 3 and see for yourself!

EOS 3 includes over 200 new and redesigned features and functions with new, customizable interface and menus for the most powerful digitizing and editing available.

:just imagine

Digitizing

A new design philosophy

Just draw all the blocks of your design in one color. When you've finished, use the object list to select the blocks you want to change to a different color and re-sequence them all at once without needing to insert machine codes in between - **let EOS 3 do it for you!**

Drawing oriented software

Simply draw any object - as in any drawing package - and fill with stitches. Every embroidery tool is a graphics tool as well, making EOS 3.0 even easier to use without unnecessary interface and tool alterations.

Two-way communication with drawing packages

Perfect Import of Vector files

EOS 3 imports vector files such as *.emf and *.wmf preserving the original reference points as they were created in your drawing package.

Export your embroidery design as a vector file

Now EOS 3 allows you to export stitches, outlines or the background image as a vector file, preserving original curves created in EOS. You can also import multiple images (vectors or bitmaps) in the same active window.

New unified embroidery format

The new *.erf file format stores outline and stitch information and - for the first time - even the image file (if selected), **ALL in one single file.**

Embroidery Recipes

No need to re-design your objects - advanced grouping of embroidery tools and parameters are **just one click away.** Just draw your outline and then select from various fill types including running stitch, satin outline, cross stitch and chenille.

Unsurpassed stitch quality

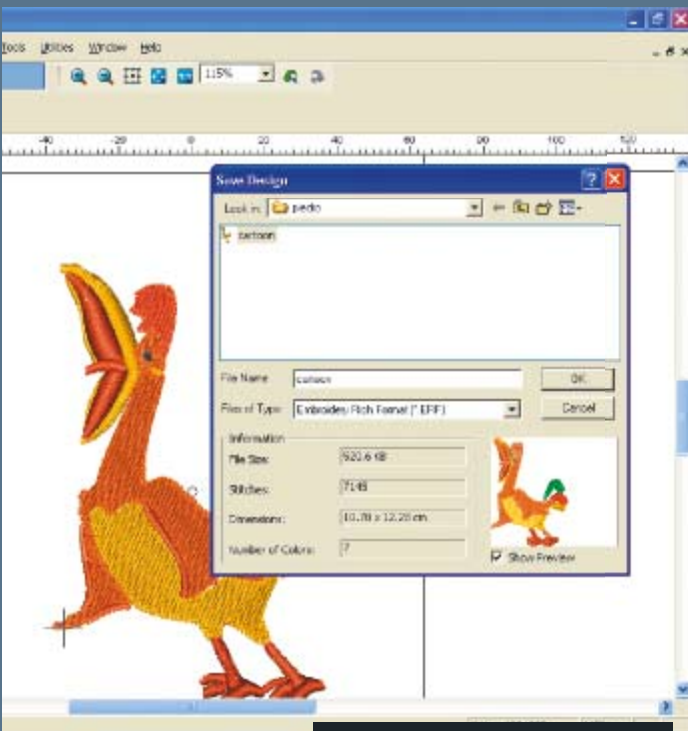
Excellent results even in the smallest areas with the new **intelligent density control** for turning fills and satin areas.

Let EOS 3 **automatically connect blocks and input tie-ins or tie-offs** (lock stitches) for you in the most efficient way with rules that you define.

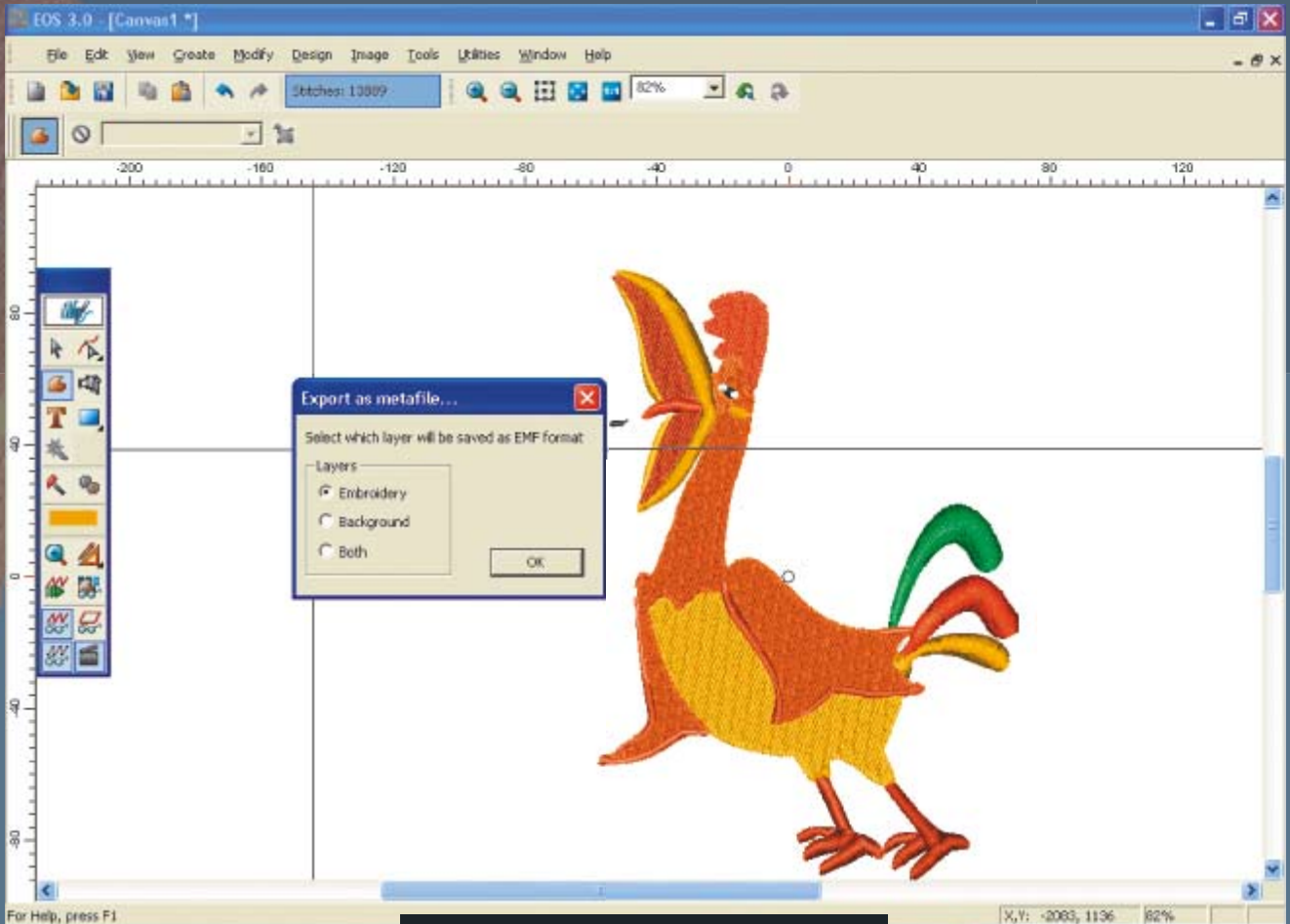
The advanced **short stitches feature** provides high stitch quality even in smaller areas.

Edit while digitizing using elastic outlines

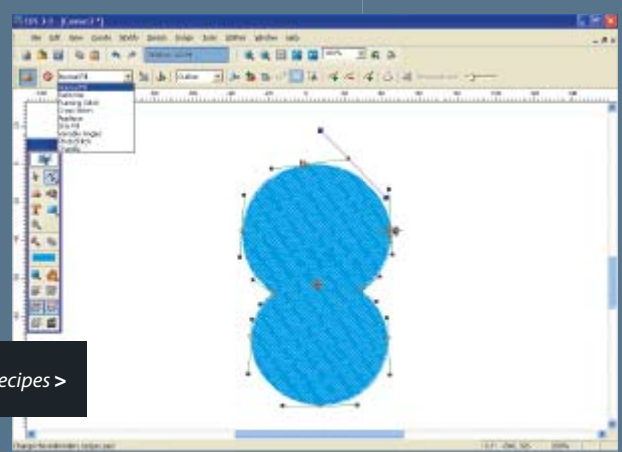
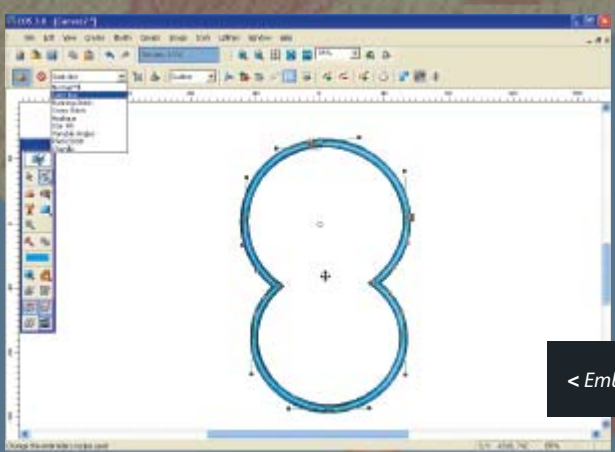
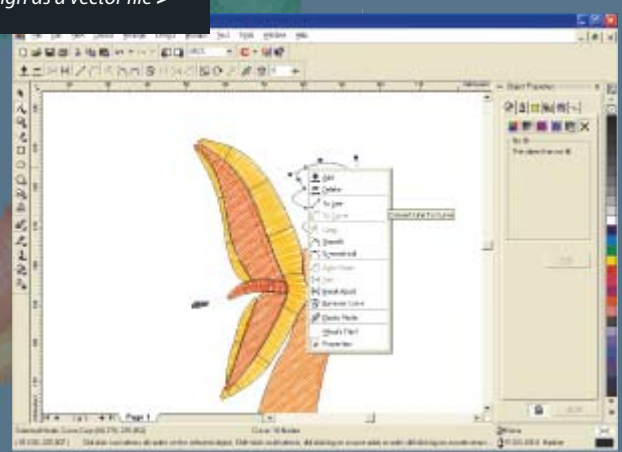
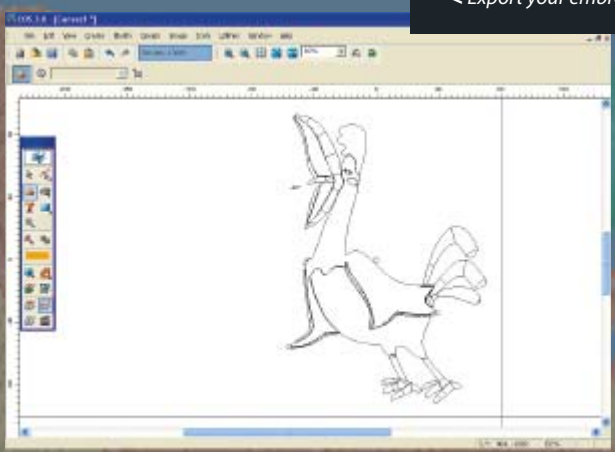
Elastic outlines gives you the freedom to transform your outlines while digitizing, while **Bezier point technology** allows smoother quality results with the fewest possible reference points. Elastic editing means that you really don't have to worry about points - just drag the line at any desired point.



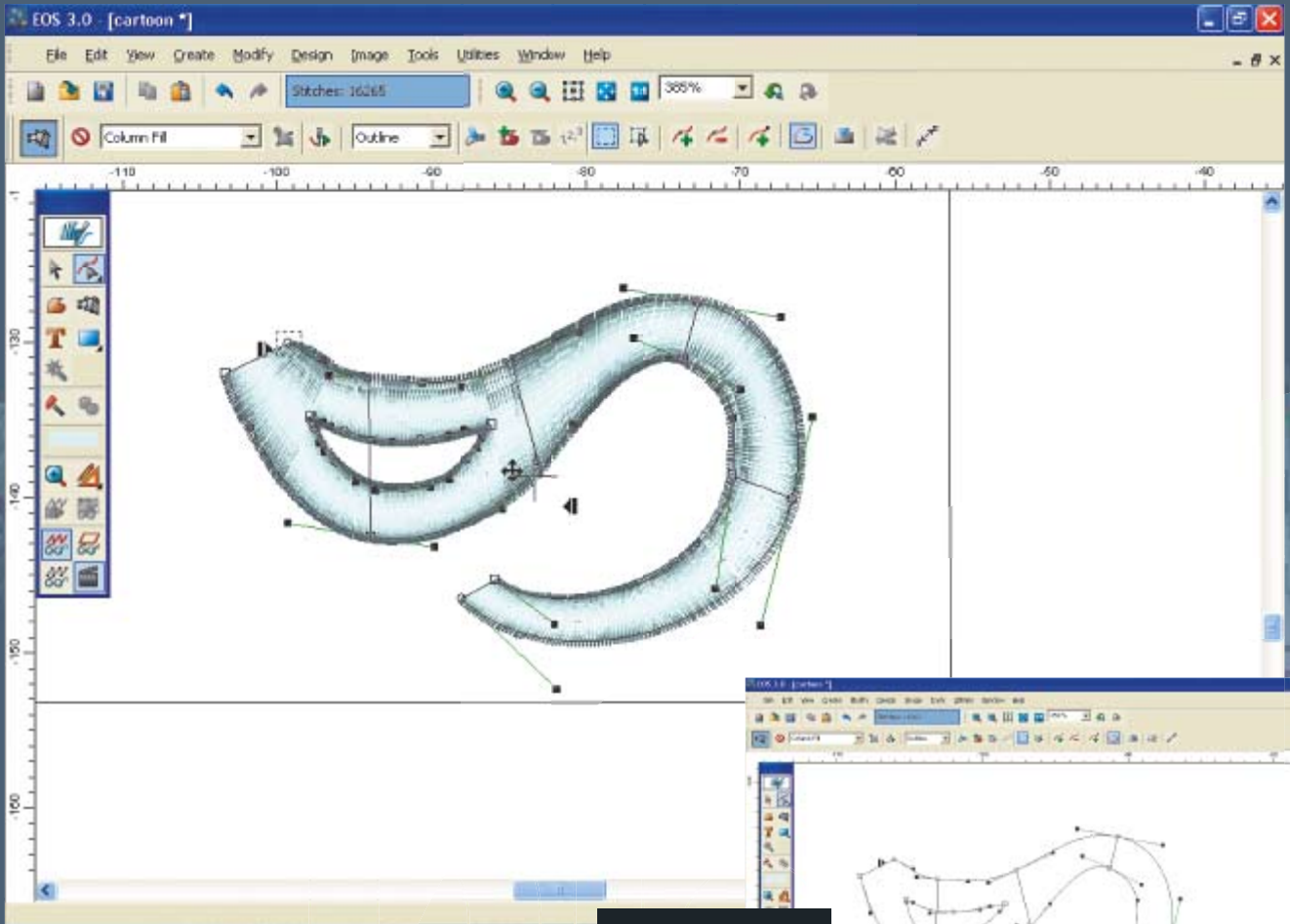
< New unified embroidery format >



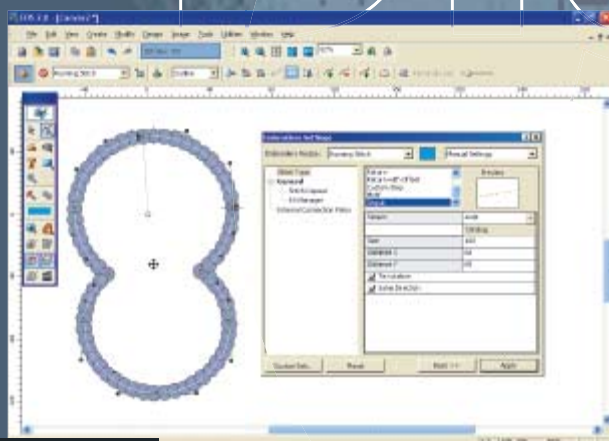
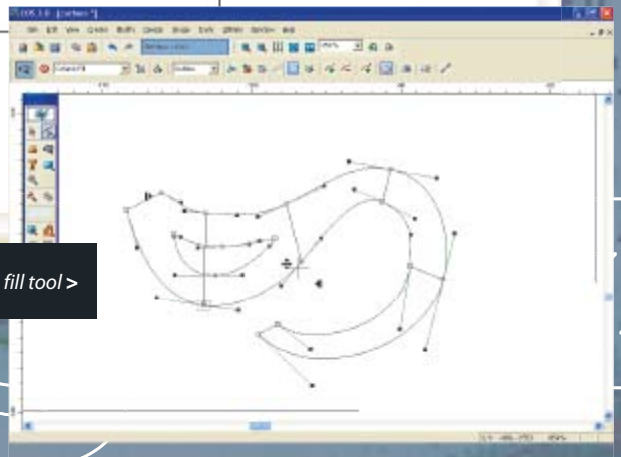
< Export your embroidery design as a vector file >



< Embroidery Recipes >

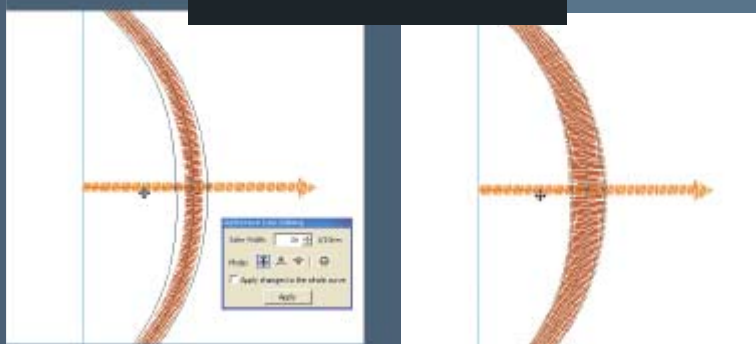


< New column fill tool >



< New sequin tool >

< edit the width of satin along the line >



New Creation Methods

_New column fill tool

Create turning fills and insert holes, without needing to create many blocks to digitize a turning fill with a hole. **Just draw the outline of the turning fill and input the hole**, and let EOS 3 do the rest.

_New sequin tool

Convert any artwork into sequin with a few clicks - with both running and fill stitch. View sequins on screen and change sequin size & color; choose between different tie functions, and rotate sequin motifs for perfect sequin designs.

_New advanced satin mode

Create a block as a column with a central line and easily edit the width of satin along the line as if it has been created with column fill. **New in EOS 3!**

_New branching

Create and edit multiple segments all with one entry and exit point but using a different stitch type for each!

Automatic Digitizing

New PhotoStitch/ Color PhotoStitch

scan or import a photo portrait and the wizard will help you automatically transform it into a single color or 4-color stitch design.

New AutoPunch

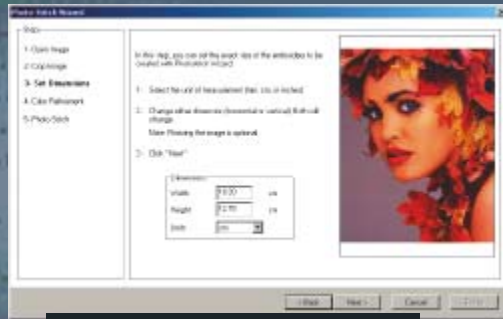
puts control of the results back in your hands, allowing you to select whether a specific block of the image will be created with satin (column fill) or complex fill. Bezier point technology guarantees fewer reference points and smooth stitch distribution.

New Auto Cross-Stitch

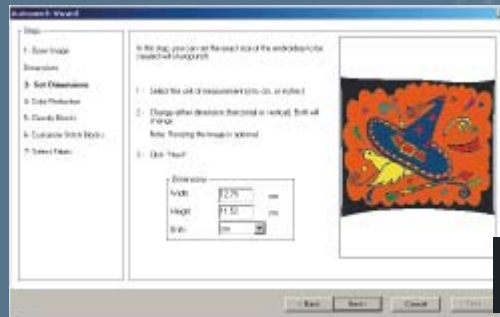
creating cross stitch designs has never been easier! Just load an image, follow the wizard steps and EOS 3 automatically creates a perfect cross stitch design.

New Magic Wand

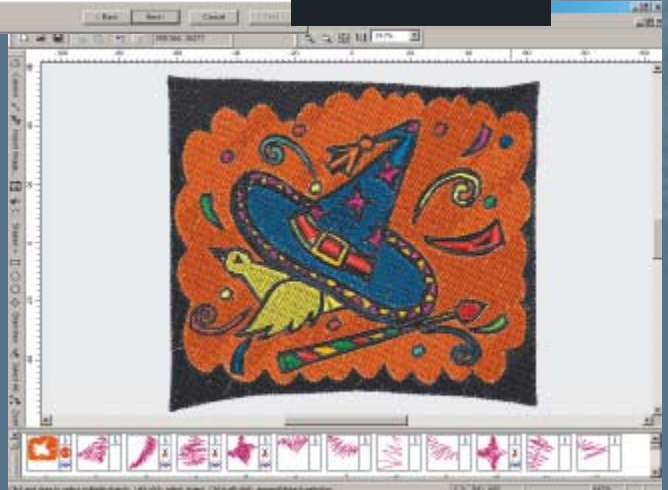
uses elastic curves and Bezier point technology to produce smoother outlines and high quality stitch results.



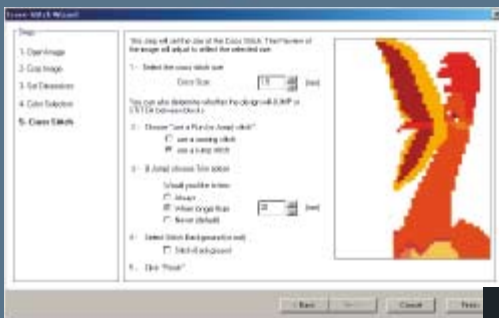
< New PhotoStitch/Color PhotoStitch >



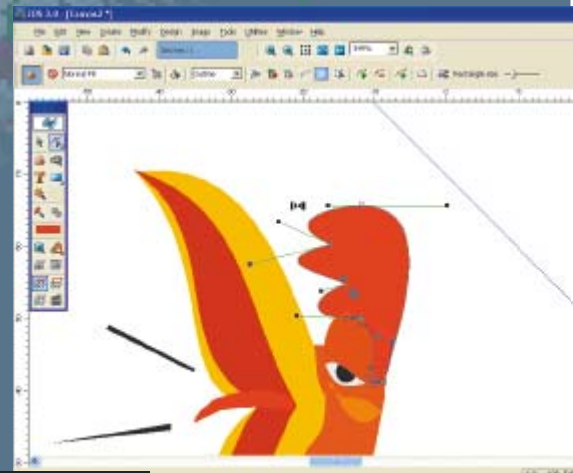
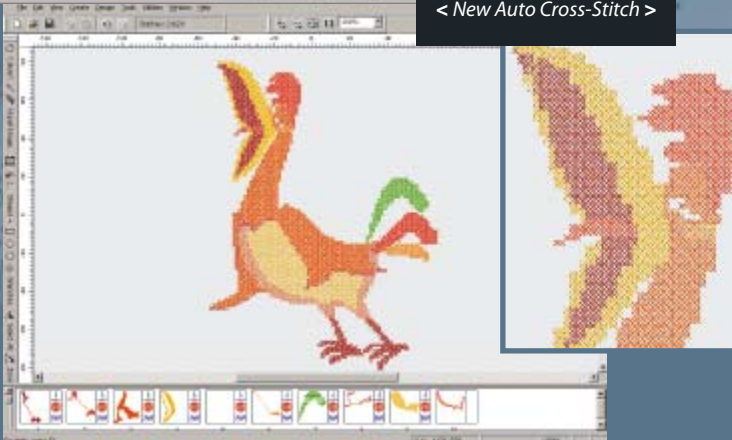
< New AutoPunch >



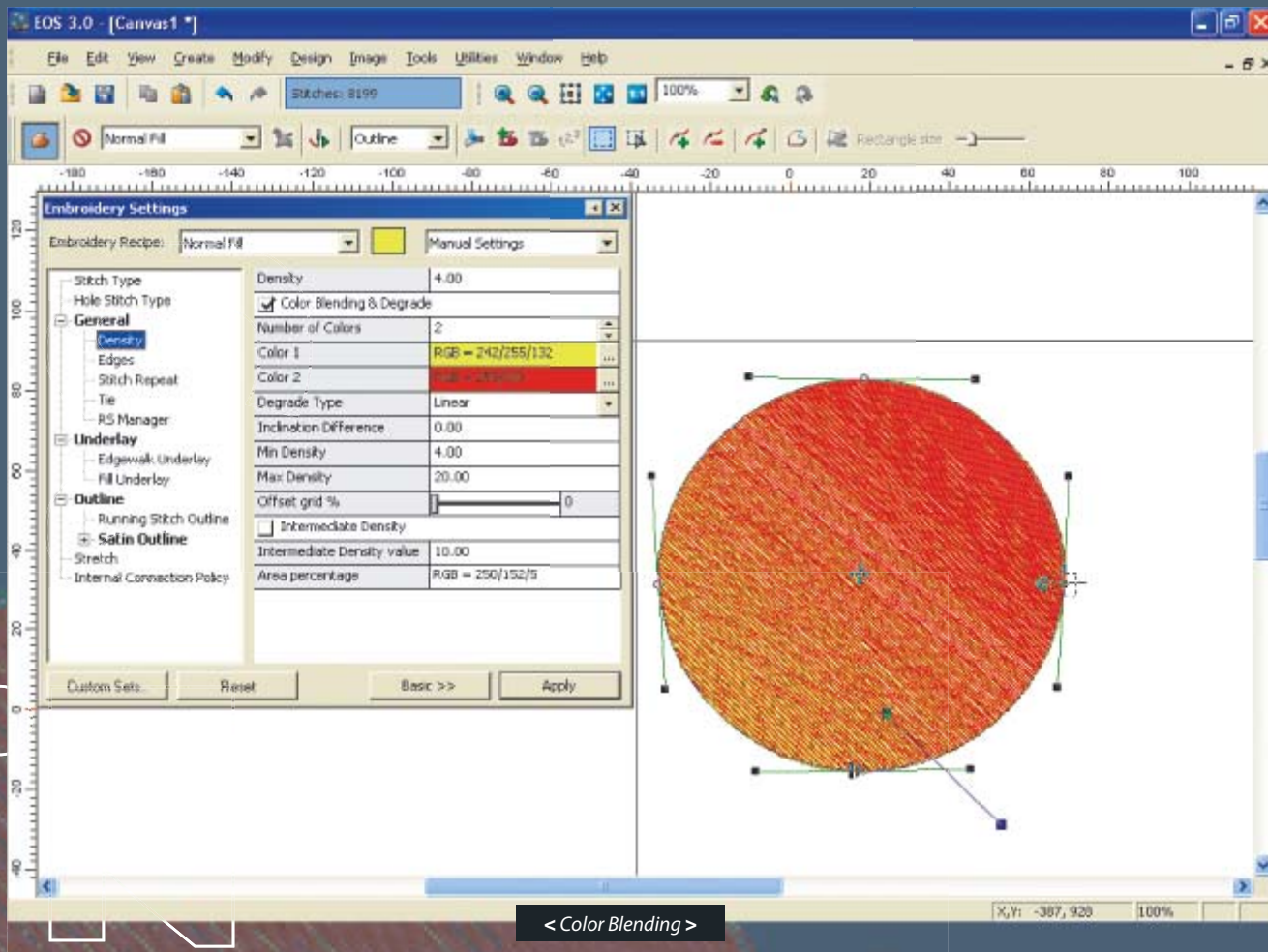
ing



< New Auto Cross-Stitch >



< New Magic Wand >



< Color Blending >

Large variety of stitch types

With the hundreds of built-in stitch types in EOS 3, you can alter your designs and use original and beautiful stitch effects including carved fills, and other new fill types such as:

- _ Cross-stitch fill**
automatically fill any block with cross-stitch.
- _ Spiral fill**
apply to any kind of shape, even geometric shapes.
- _ Longitudinal stitch**
redesigned to be able to input holes in any longitudinal block and produce even better results, without clustering of stitches in any point.

Intricate Effects

- _ Wave Column**
beautiful curved and decorative effects, new in EOS 3!
- _ Color-Blending & Degrade**
color shading between blocks with reverse densities and stitch directions.
- _ 3D Filtering**
transform your embroidery design by applying a variety of 3 dimensional filters.



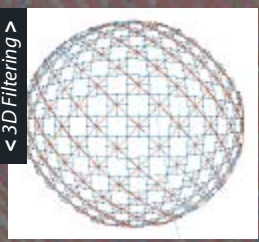
< Spiral Fill >



< Longitudinal Stitch >



< Wave column >



< 3D Filtering >

Lettering

Both Lettering and HyperFont, incorporate elastic outline and Bezier point technology. Fewer reference lines mean smoother stitch distribution, making the lettering quality better by far, even for small letters.

With over 140 built-in fonts, Lettering has been completely redesigned, starting from the interface and in keeping with popular word processing software standards:

Font Profile

save your favorite Lettering embroidery parameters once as a profile with fabric, font or style and recall directly from the font list. No need to keep re-entering letting properties all the time - a real time saver!

Convert

any built-in Compucon font from column to running stitch or satin outlines, complex fill, appliqué, and so on. More power in your hands!

Auto-Outline for Lettering

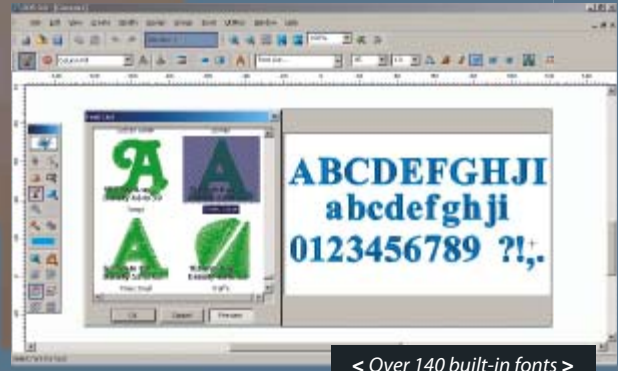
can be running stitch, special stitches or satin. Create your own font easier than ever with EOS 3!

New HyperFont

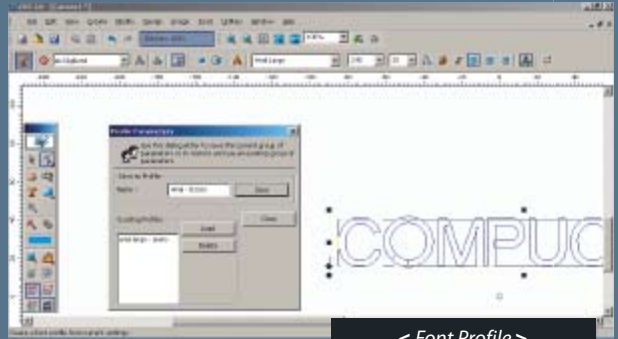
now uses a wizard and allows you to convert any Windows True Type Font onto stitch fonts with:

- Branches (turning fills)
- Complex fill
- Satin borders
- Running stitches
- Appliqué

There are no limits with HyperFont - you can even convert your True Type fonts to special stitch fonts or even to sequins and chenille for beautiful designs.



< Over 140 built-in fonts >



< Font Profile >



< Convert >

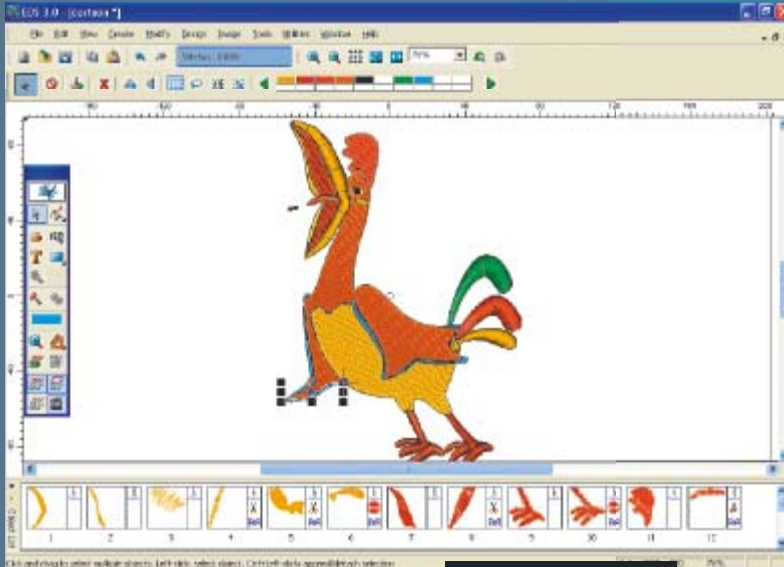
Lettering

hyperfont

hyperfont

hyperfont

Editing



< Block List >

Object based embroidery

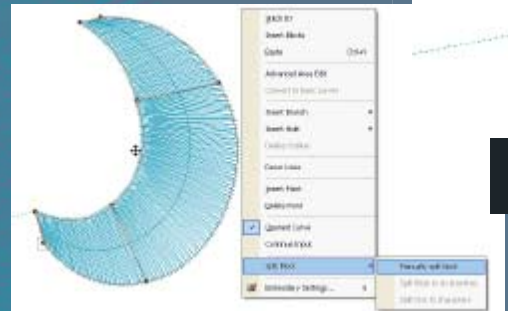
New object based technology makes editing simpler than ever

Easily edit
by stitch, by block, multiple blocks or the whole design using a variety of new and powerful editing features:

Block list
the object list makes editing, re-sequencing and selection of blocks easy.

Block editing
change properties, entry and exit point and stitch inclination etc with just one click

Input embroidery settings
EOS 3 includes two different ways for inputting your embroidery settings: one for beginners and one for more advanced users.



Merge & split blocks

Want to avoid overlapping between blocks with common characteristics? How about a uniform outline or underlay for 2 or more different blocks? Just click on Merge and EOS 3 does it for you. What if you want to split one block in small blocks and treat them separately? Just click on Split Block.

Advanced area editing

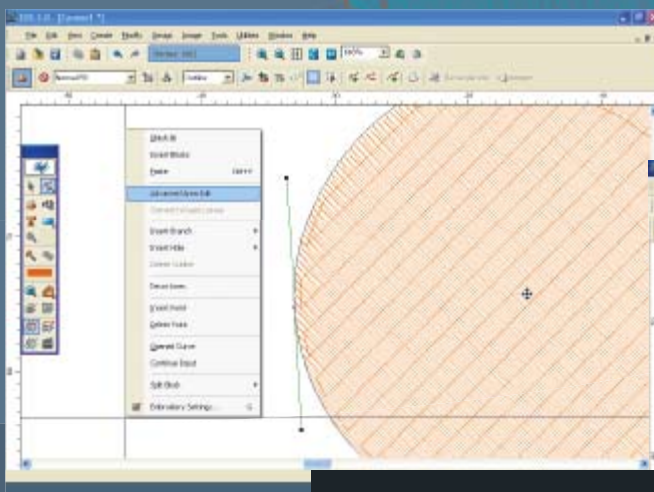
How many times have you wanted to treat the underlay or the auto-outline separately from the rest of the block? EOS 3 does it! Just click on Advanced Area Editing.

New snap options

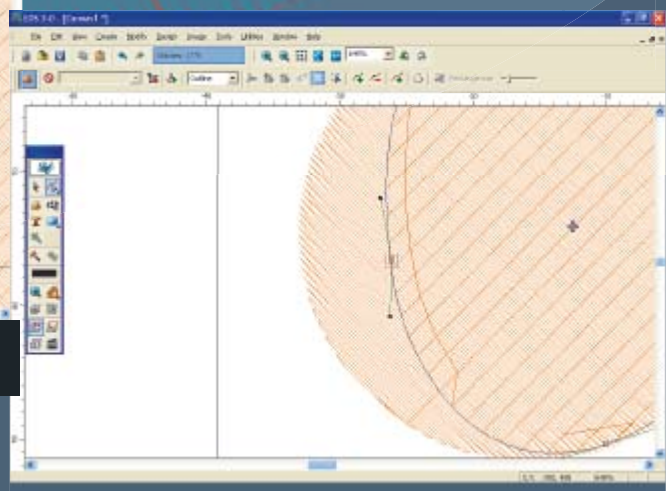
Snap your reference points to guideline – grid. Insert and edit your own guideline in the x, y and z axis.

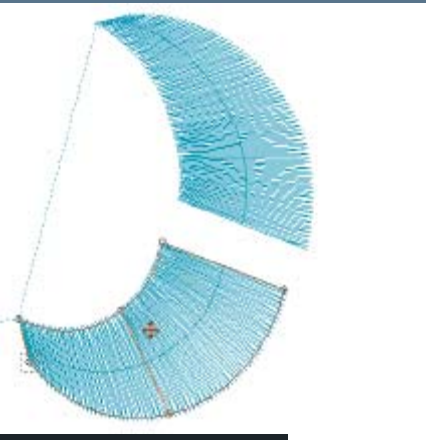
Preset fabrics / automatic parameters

Don't know which parameters to use? Just click on Preset Fabrics, EOS will automatically set tried & tested embroidery settings and values for different fabrics and styles of embroidery.

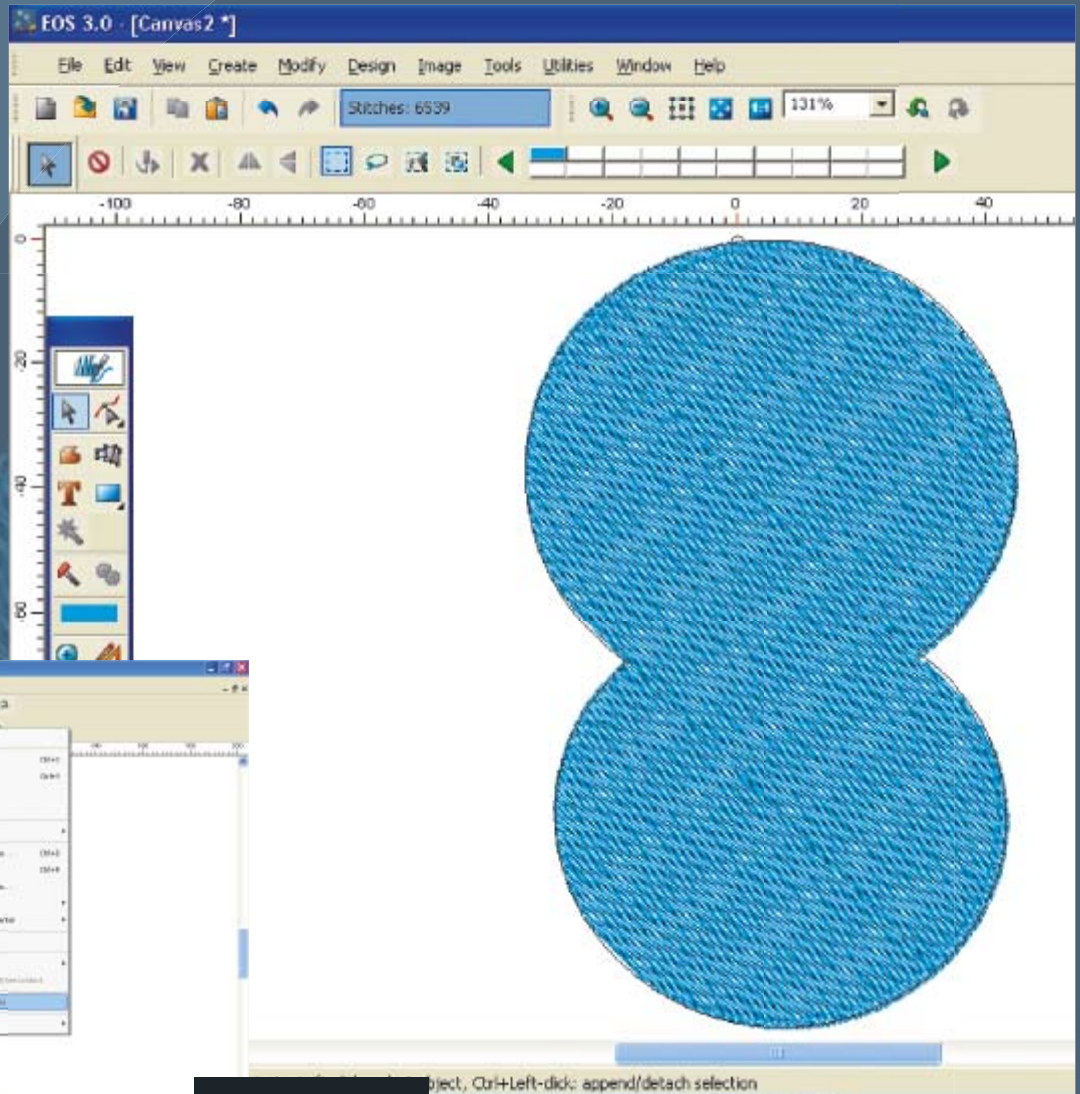


< Advanced Area Editing >

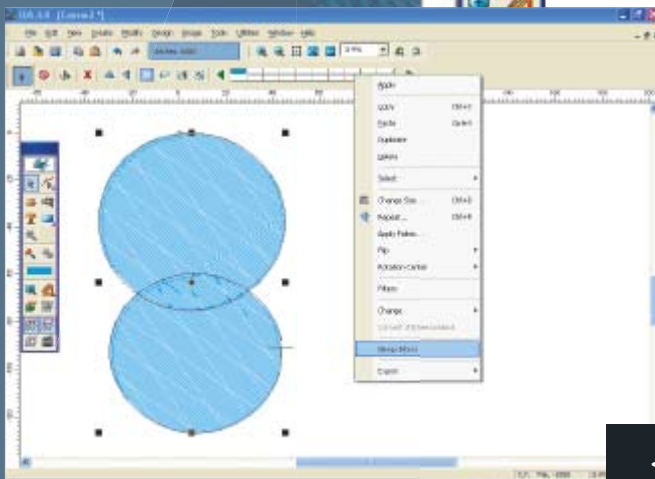




< Split Blocks >



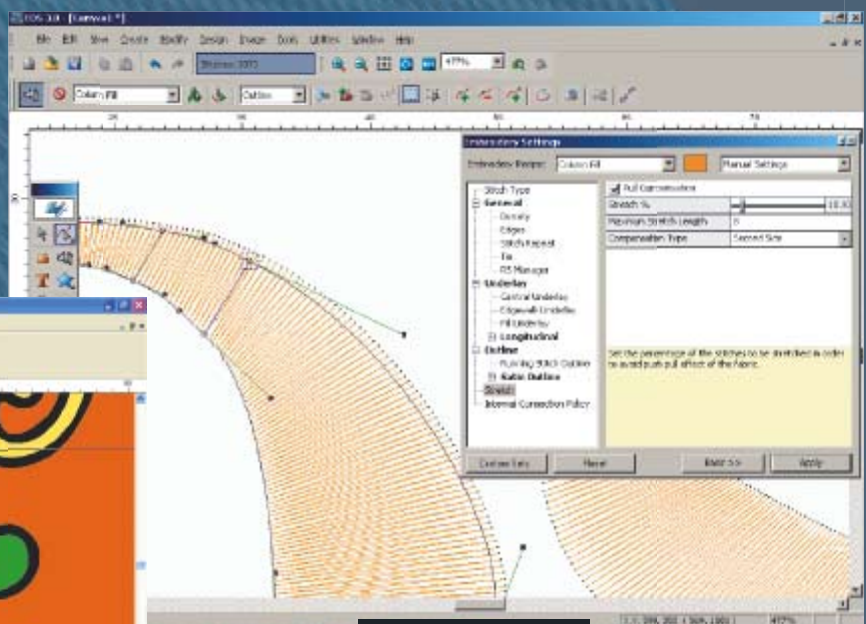
< Merge Blocks >



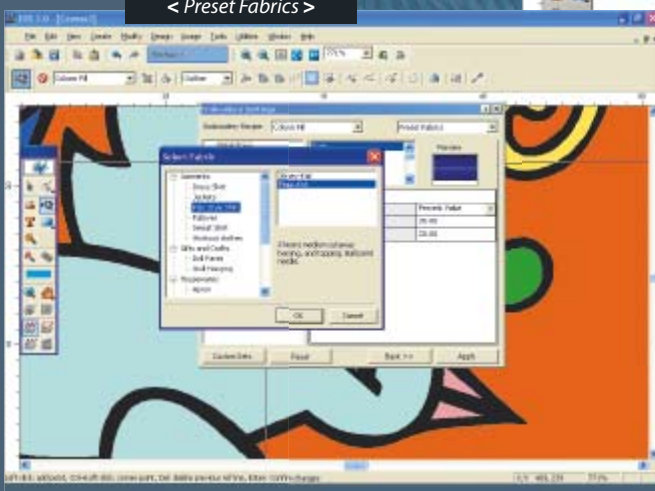
Change satin width for stitch files

New advanced stretch feature

Combine push and pull compensation in first or second side or both sides of the block.



< Stretch >



< Preset Fabrics >

Tools

Drawing package / image processing

Refine your scanned image by making use of a variety of different image processing filters.

Vector Editor

A complete drawing package for vector images, that provides unlimited creation and editing options for vector objects.

Embroidery Simulator

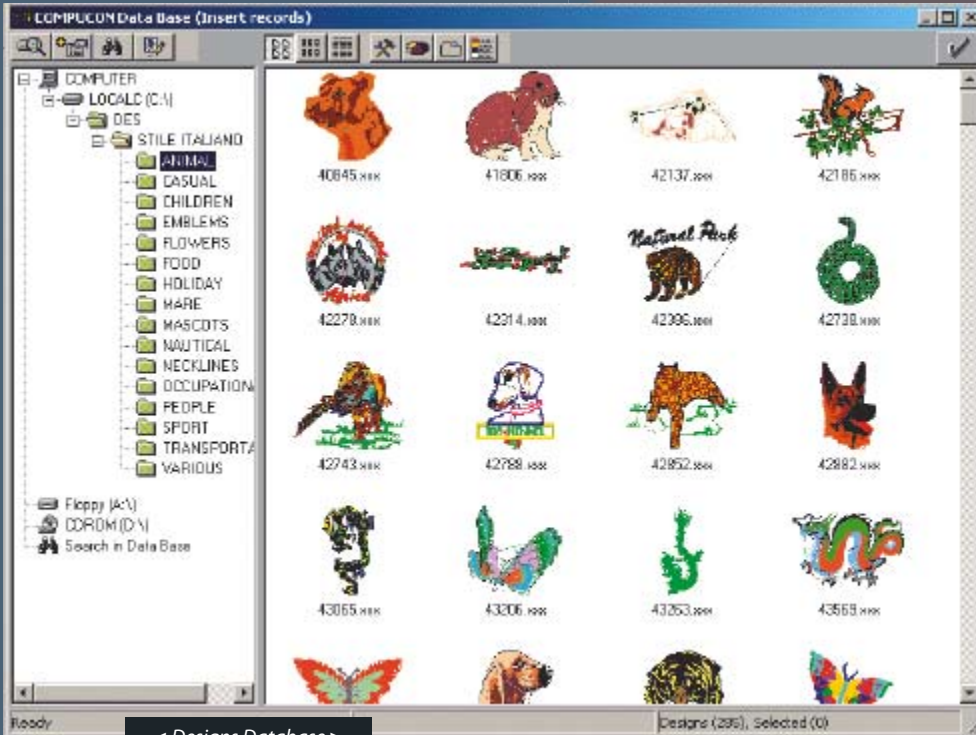
Save time and money by creating your embroidery samples on-screen in 3D view on caps, sweaters, or your preferred fabric backgrounds. Print or Save your simulation as a jpeg or bitmap and send to your customers for a more professional presentation.

Advanced Design Management

_EOS 3 incorporates an SQL Database with Real networking capabilities. Backup, restore, and recover your designs by custom criteria such as the number of stitches, colors, company name and so on.

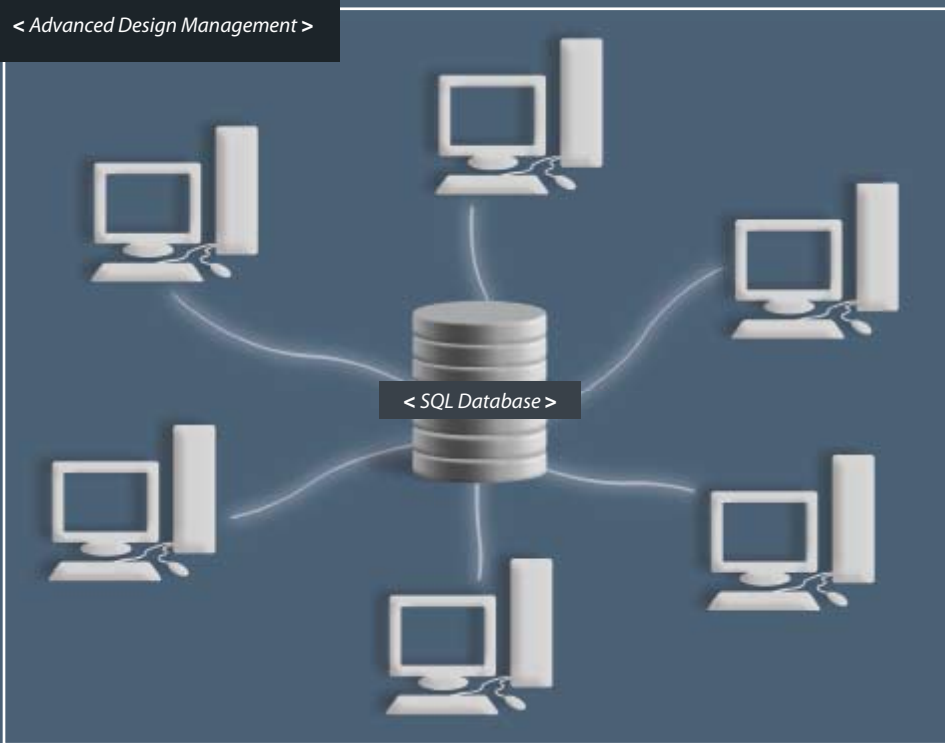
_Print your design or multiple designs and create beautiful printed catalogs of your work. Read / Write / Format / Machine Functions

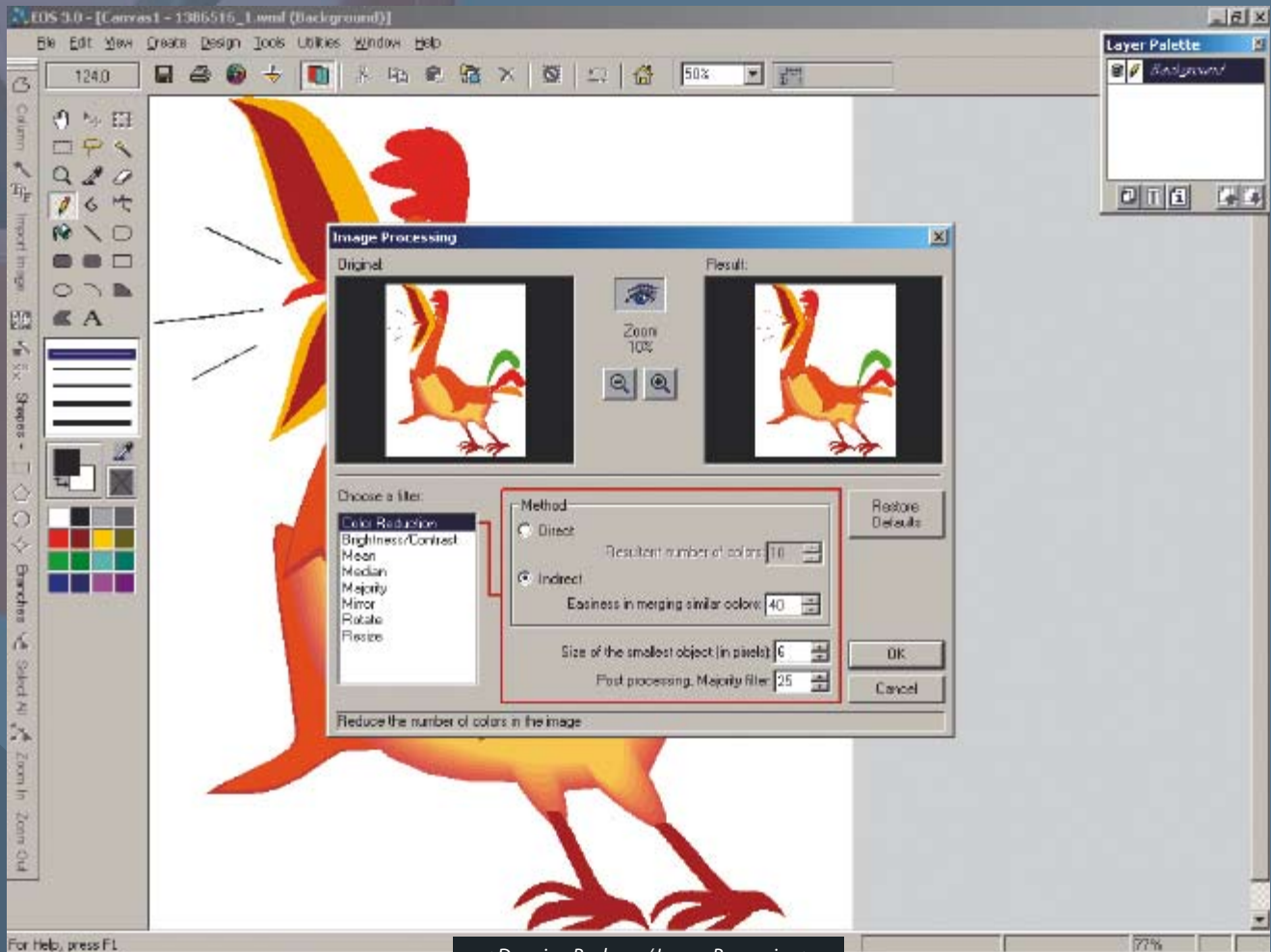
_Read from, write to or even format designs for all the most popular machine formats. Send a design as mail in a variety of embroidery formats



< Designs Database >

< Advanced Design Management >



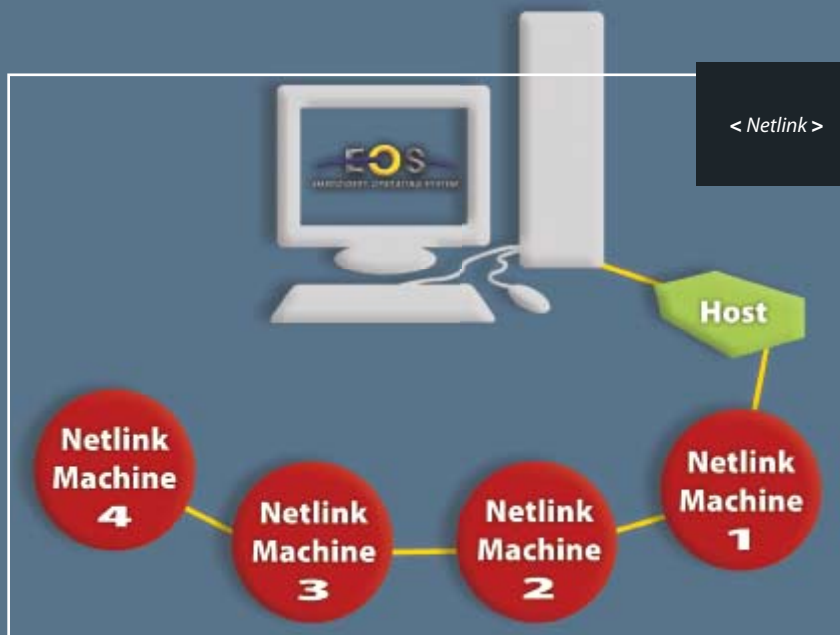


< Drawing Package / Image Processing >

Machine Networking

NetLink v2.0, an intelligent networking system, you can connect your embroidery machines directly to the PC avoiding the use of disks and therefore saving valuable production time.

< Embroidery Simulator >



< Netlink >

Support

For technical support on all EOS software products call us or send us an e-mail.





EMPHOS
EMBROIDERY OPERATING SYSTEM
:just imagine



Headquarters

14th km Thessaloniki / Moudania Highway
P.O. Box 445, 57001 Themi, Thessaloniki, GREECE
Tel: +30 2310 490300, Fax: +30 2310 490399, 490388
info@compucon.gr www.compucon.gr

COMPUCON U.S.A.

620 Green Valley Road, Suite 103, Greensboro, NC 27408, U.S.A.
Tel.: 336-294-0604, Fax: 336-854-2233
info@compuconusa.com www.compuconusa.com

